

## Statement of Verification

BREG EN EPD No.: 000406

Issue 02

This is to verify that the

### Environmental Product Declaration

provided by:

**CCL International**



is in accordance with the requirements of:

**EN 15804:2012+A1:2013**

and

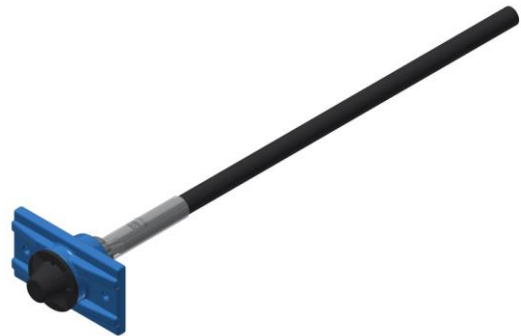
**BRE Global Scheme Document SD207**

This declaration is for:

**1 kg of XU2 Monostrand Unbonded Post Tensioning Anchor System**

### Company Address

Unit 8,  
Millennium Drive,  
Leeds,  
LS11 5BP



A handwritten signature in black ink, appearing to read 'E Baker'.

Emma Baker  
Operator

06 January 2022  
Date of this Issue

23 December 2021  
Date of First Issue

22 December 2026  
Expiry Date



This Statement of Verification is issued subject to terms and conditions (for details visit [www.greenbooklive.com/terms](http://www.greenbooklive.com/terms).)

To check the validity of this statement of verification please, visit [www.greenbooklive.com/check](http://www.greenbooklive.com/check) or contact us.

BRE Global Ltd., Garston, Watford WD25 9XX.

T: +44 (0)333 321 8811 F: +44 (0)1923 664603 E: [Enquiries@breglobal.com](mailto:Enquiries@breglobal.com)



### Information modules covered

Product			Construction		Use stage							End-of-life				Benefits and loads beyond the system boundary
					Related to the building fabric				Related to the building							
A1	A2	A3	A4	A5	B1	B2	B3	B4	B5	B6	B7	C1	C2	C3	C4	D
Raw materials supply	Transport	Manufacturing	Transport to site	Construction – Installation	Use	Maintenance	Repair	Replacement	Refurbishment	Operational energy use	Operational water use	Deconstruction demolition	Transport	Waste processing	Disposal	Reuse, Recovery and/or Recycling potential
<input checked="" type="checkbox"/>	<input checked="" type="checkbox"/>	<input checked="" type="checkbox"/>	<input type="checkbox"/>	<input type="checkbox"/>	<input type="checkbox"/>	<input type="checkbox"/>	<input type="checkbox"/>	<input type="checkbox"/>	<input type="checkbox"/>	<input type="checkbox"/>	<input type="checkbox"/>	<input type="checkbox"/>	<input type="checkbox"/>	<input type="checkbox"/>	<input type="checkbox"/>	<input type="checkbox"/>

Note: Ticks indicate the Information Modules declared.

### Manufacturing site

CCL International  
Unit 8,  
Millennium Drive,  
Leeds,  
LS11 5BP

### Construction Product

#### Product Description

The XU2 is an ETA-approved monostrand unbonded post-tensioning anchor system most commonly used in post-tensioned slab construction. It is used in buildings, bridges, containment and civil structures, as well as repair and strengthening applications. The anchor includes XU2-13 and XU2-15 for 13 mm and 15 mm nominal diameter strands respectively as described in ETA-19/0733.



The XU2 system covers the whole anchor assembly comprising the coated steel force transfer unit, the steel wedge, the plastic sleeve, the plastic nut and the plastic sealing cap.

Anchors are available in two sizes:

Anchor Assembly and Description	No. of strands	Anchor Assembly Weight (Kg)
XU2-13	1	0.72
XU2-15	1	1.13

This is an average EPD covering both anchor sizes produced over the course of 1 year.

### Technical Information

Essential characteristics	Performance	Standard
Anchorage components	Section 1.2.2 and annex B-E	ETA-19/0733
Strand characteristics	Section 1.2.3.3, table 02 and annex A	ETA-19/0733
Prestressing forces	Section 1.2.3.4 and table 03	ETA-19/0733
Friction losses and anchorage wedge set	Section 1.2.5 and 1.2.6	ETA-19/0733
Mechanical resistance and stability	Section 2	ETA-19/0733

### Main Product Contents

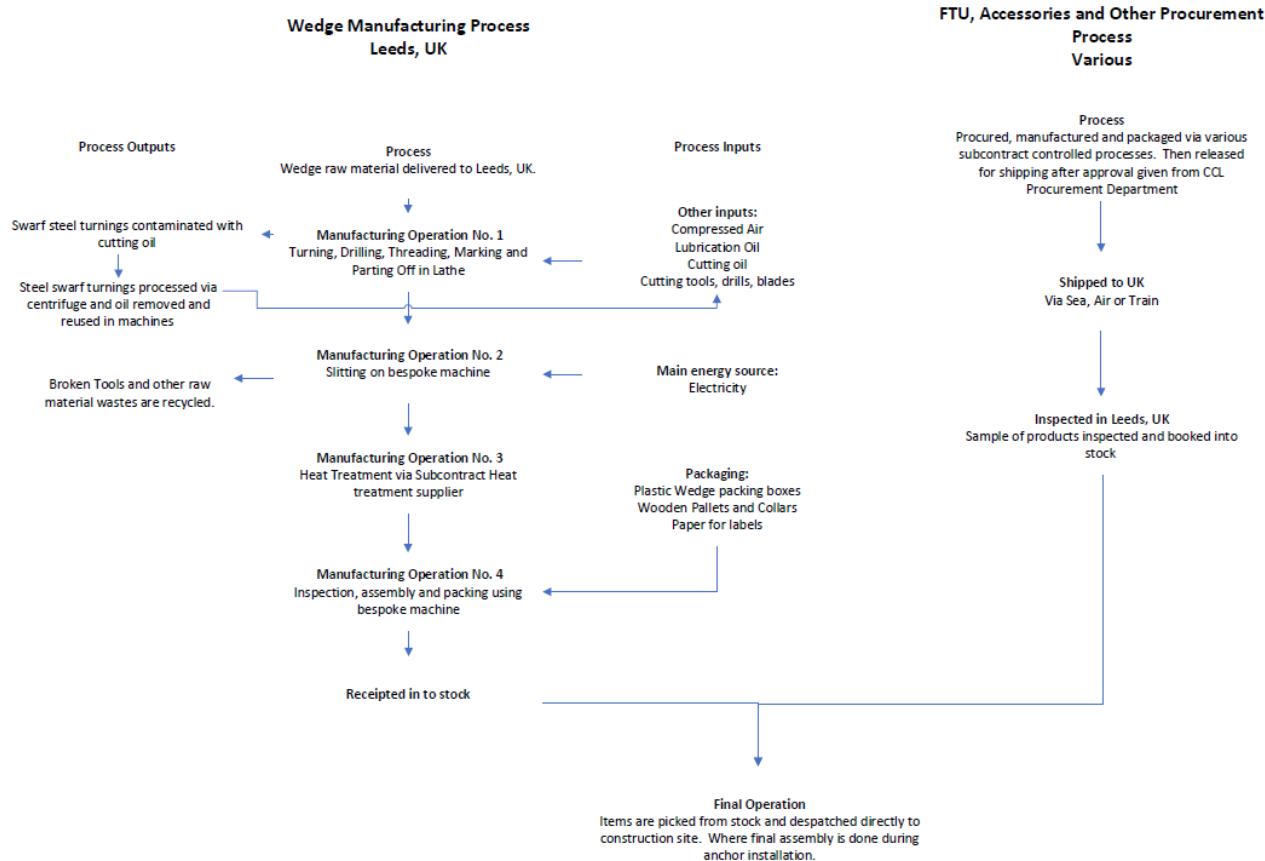
Material/Chemical Input	%
Steel	85%
Plastic	15%

Material composition of all products assessed within this average EPD

### Manufacturing Process

Raw wedge material is delivered to the factory in Leeds where it undergoes turning, drilling, threading, marking and parting off in a lathe. Steel Swarf waste is processed and input back into the system. The wedges are then slitted, heat treated and then inspected before packaging and receipted into stock ready for dispatch.

## Process flow diagram



## Life Cycle Assessment Calculation Rules

### Declared unit description

1 kg of XU2 anchor as used in precast and post tensioning concrete

### System boundary

This is a cradle to gate EPD, reporting all production life cycle stages of modules from A1 to A3 inclusive in accordance with EN 15804:2012+A1:2013.

### Data sources, quality and allocation

Data collected by CCL for the production of the XU2 Anchors for the period 1st January 2020 to 31<sup>st</sup> December 2020 has been used for this EPD.

Electricity consumption was determined by measuring the consumption on the manufacturing site for all production lines and weighted proportionally by production of XU2 anchors. The consumption of water is calculated based on the factual consumption.

Figures for the raw materials, ancillary materials and packaging were from actual usages. Allocation of energy, water, and waste has been done according to the provisions of the BRE PCR PN514 and EN 15804.

Secondary data has been drawn from the BRE LINA database v2.0.86. The background LCI datasets are based on ecoinvent v3.2 (2015) which was used for all other material energy and waste data requirements.

### Cut-off criteria

All inputs or outputs have been included and all raw materials, packaging and transport, energy, water use and wastes, are included, except for direct emissions to air, water and soil, which are not measured. Upstream extraction and/or processing of inputs are included within the use of the background datasets within LINA.

## LCA Results

(MND = module not declared; MNR = module not relevant; INA = indicator not assessed; AGG = aggregated)

### Parameters describing environmental impacts

			GWP	ODP	AP	EP	POCP	ADPE	ADPF
			kg CO <sub>2</sub> equiv.	kg CFC 11 equiv.	kg SO <sub>2</sub> equiv.	kg (PO <sub>4</sub> ) <sup>3-</sup> equiv.	kg C <sub>2</sub> H <sub>4</sub> equiv.	kg Sb equiv.	MJ, net calorific value.
Product stage	Raw material supply	A1	2.09	9.20E-08	0.00854	0.00334	0.00282	2.26E-06	29.7
	Transport	A2	0.285	4.81E-08	0.00455	0.000545	0.000344	2.86E-07	4.13
	Manufacturing	A3	-0.120	1.43E-08	0.000992	0.000344	0.000100	2.89E-07	2.96
	Total (of product stage)	A1-3	2.255	1.54E-07	0.0140	0.00422	0.00326	2.84E-06	36.8

GWP = Global Warming Potential;  
 ODP = Ozone Depletion Potential;  
 AP = Acidification Potential for Soil and Water;  
 EP = Eutrophication Potential;

POCP = Formation potential of tropospheric Ozone;  
 ADPE = Abiotic Depletion Potential – Elements;  
 ADPF = Abiotic Depletion Potential – Fossil Fuels;

### Parameters describing resource use, primary energy

			PERE	PERM	PERT	PENRE	PENRM	PENRT
			MJ	MJ	MJ	MJ	MJ	MJ
Product stage	Raw material supply	A1	0.957	5.83E-06	0.957	31.3	0	31.3
	Transport	A2	0.0885	1.36E-07	0.0885	4.19	0	4.19
	Manufacturing	A3	3.86	5.01E-07	3.86	3.85	0	3.85
	Total (of product stage)	A1-3	4.91	6.47E-06	4.91	39.34	0	39.3

PERE = Use of renewable primary energy excluding renewable primary energy used as raw materials;  
 PERM = Use of renewable primary energy resources used as raw materials;  
 PERT = Total use of renewable primary energy resources;

PENRE = Use of non-renewable primary energy excluding non-renewable primary energy resources used as raw materials;  
 PENRM = Use of non-renewable primary energy resources used as raw materials;  
 PENRT = Total use of non-renewable primary energy resource

### Parameters describing resource use, secondary materials and fuels, use of water

			SM	RSF	NRSF	FW
			kg	MJ net calorific value	MJ net calorific value	m <sup>3</sup>
Product stage	Raw material supply	A1	0	0	0	0.0395
	Transport	A2	0	0	0	0.000975
	Manufacturing	A3	0	0	0	0.00119
	Total (of product stage)	A1-3	0	0	0	0.0416

SM = Use of secondary material;  
 RSF = Use of renewable secondary fuels;

NRSF = Use of non-renewable secondary fuels;  
 FW = Net use of fresh water

## LCA Results (continued)

Other environmental information describing waste categories					
			HWD	NHWD	RWD
			kg	kg	kg
Product stage	Raw material supply	A1	0.168	0.0979	0.0000390
	Transport	A2	0.00175	0.0601	0.0000282
	Manufacturing	A3	0.000916	0.00901	0.0000204
	Total (of product stage)	A1-3	0.170	0.167	0.0000876

HWD = Hazardous waste disposed;  
 NHWD = Non-hazardous waste disposed;  
 RWD = Radioactive waste disposed

Other environmental information describing output flows – at end of life						
			CRU	MFR	MER	EE
			kg	kg	kg	MJ per energy carrier
Product stage	Raw material supply	A1	0	0	0	0
	Transport	A2	0	0	0	0
	Manufacturing	A3	0	0.0991	0	0
	Total (of product stage)	A1-3	0	0.0991	0	0

CRU = Components for reuse;  
 MFR = Materials for recycling

MER = Materials for energy recovery;  
 EE = Exported Energy



## References

BSI. Sustainability of construction works – Environmental product declarations – Core rules for the product category of construction products. BS EN 15804:2012+A1:2013. London, BSI, 2013.

BSI. Environmental labels and declarations – Type III Environmental declarations – Principles and procedures. BS EN ISO 14025:2010 (exactly identical to ISO 14025:2006). London, BSI, 2010.

BSI. Environmental management – Life cycle assessment – Principles and framework. BS EN ISO 14040:2006. London, BSI, 2006.

BSI. Environmental management – Life cycle assessment – requirements and guidelines. BS EN ISO 14044:2006. London, BSI, 2006.